



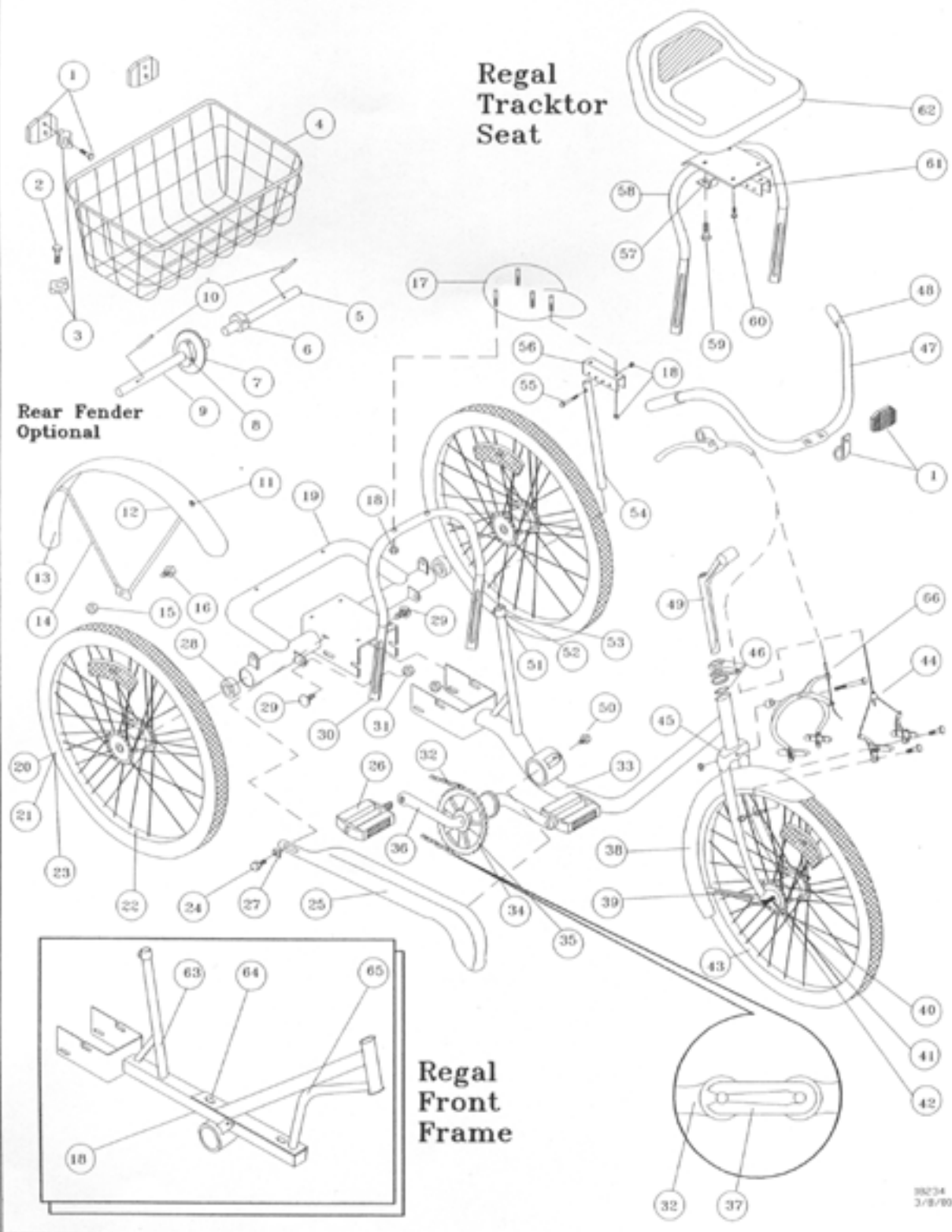
DeSOTO CLASSIC and EZ ROLL REGAL



OWNER'S GUIDE

#18234 \$1,00 2/00

ILLUSTRATED PARTS BREAKDOWN



DeSOTO CLASSIC & EZ ROLL REGAL

Assembly Instructions

1. Preparation

Remove all parts from the frame and wheel cartons. Check tire air pressure and inflate to 35 psi. Make sure tires are properly seated on rims.

2. Rear Frame and Wheels

Loosen set collar (6) from left rear axle and slide axles (5 & 9) outward until the set collar and the freewheel adapter (7) are against the inside axle bearings; do not let freewheel adapter fall off. Insert axle shaft into wheel (24) and secure with roll pin (10). Please note that CB/ 3SPCB models use groove pins in place of the roll pins. Be careful not to damage spokes with hammer while installing roll pins. Repeat procedure for both sides. If there is any side-to-side movement of the axles, loosen set screw in collars, slide axles and collars to eliminate excess side movement, and retighten set screws. NOTE: Install mag wheels with the steel collar facing the inside of frame.

For coaster brake and three-speed coaster brake, see "Installation Guide".

3. Front Frame

Slide front frame (34) into rear frame (19) transmission box (open side down) as far as possible. Install four 3/8" carriage bolts (30) through the slots in the sides of the transmission box from the outside inward. Be sure the square shoulders of the bolts seat into each slot. Install flange nuts (32), but do not tighten at this time.

4. Caliper Brake, Front Fender and Wheel

Install front caliper brake (45) to front fork by inserting the brake centerbolt through the holes in the front of the fork. Place one contoured washer on each side of the fork. Before installing nut, slide the fender bracket (39) over the centerbolt and secure with washer and nut. Install front wheel in the slots in the fork. Install axle retainers (43); make certain the tabs on the washers are pointing upward and seated into the holes in the fork. Place the fender braces onto each side of the wheel axle. After checking that the wheel is centered evenly between the fork blades, secure with washers (42) and nuts (41).

4a. Cantilever Brake, Front Fender and Wheel

The front cantilever brake pad assembly comes attached to the respective front fork. Unwrap the brake cable and insert the "ball" end into the round slot in the brake lever. Place the bezel (silver cap-type piece) on the cable into the hole in the brake base (mounted on the handlebar). Feed the cable through the cable guide on the front of the fork. Thread the brake wire through the cable clamp and snugly tighten the clamp so that the hook portion of the clamp is facing the wheel. Unwrap the cantilever brake cable and place the ball end in the round slot in the cantilever brake. Thread the cantilever brake cable through the hook portion of the cable clamp and feed into the opposite cantilever brake pad cable clamp. Pull the slack out of the cable so that the cantilever brake pads are within 1/8" of the wheel. Snugly tighten the cantilever brake pad cable clamp. Returning to the brake wire cable clamp, pull the brake cable through the clamp until the slack cable is removed and tighten the clamp.

5. Pedals

To install pedals (27), screw the pedal marked "R" into the right side of the crank in a clockwise direction. Install the left pedal (marked "L") by turning in a counterclockwise direction. Use a 9/16" open-end wrench to tighten.

6. Chain

Install drive chain (33) over front and rear sprockets and join together with connecting link. Install connecting link and spring clip (38) using pliers. Slide the frame sections apart, evenly, until the chain is tight (approximately 3/4" up and down movement is permissible) and securely tighten all four rear frame bolts. Rotate the pedals several times to check that the chain is running freely - KEEP FINGERS CLEAR! If binding is encountered, the chain may have to be loosened until the binding is eliminated.

7. Chainguard

To install chainguard (26), place over chain and slide rear of guard under top of transmission box. When the screw grommet (28) on the rear of the guard is lined up with the slotted hole in the side of the transmission box,

DeSOTO CLASSIC & EZ ROLL REGAL

Assembly Instructions

Loosen the nuts on the brake pads and position pads so they line up evenly with the rim. Tighten the brake pad nuts securely. Working through the spokes (or with a helper) squeeze the caliper pads tightly to the rim. Pull the excess wire downward through the drilled bolt and tighten the nut. DO NOT over tighten as this can damage the cable. Release the caliper and check the gap between the wheel and the pads. Apply the brake several times to see that the pads engage the rim tightly and evenly. To center the pads, if uneven, loosen caliper mounting bolt (through fork), reposition and re-tighten. To tighten pads further, rotate the thumbscrew on the hollow bolt counterclockwise (unthread) and lock in position with lock nut. Lastly, place the protective cable and piece over the end of the cable and crimp with pliers. This will keep the cable from fraying and also protect the sides from the sharp wire ends.

11. Reflectors

Install the red reflectors on the back of the basket. Insert the screw provided with the reflector through the reflector clip and thread partially into the hole in the back of the reflector. The open part of the arch in the reflector clip should be facing the back of the reflector. Place the reflector on the basket so the clip will capture one of the vertical wires and tighten the screw. Repeat for other side. The basket reflectors should be about one foot apart.

* Steel Spoke Wheels-Install the clear wheel reflectors by placing between the spokes, as near the rim as possible. Locate the spoke groove on one side of the reflector and place over one of the spokes. Insert screw provided into this side and secure with nut on other side. Make sure nut seals into reflector recess before tightening; do not over tighten. Repeat for other wheels.

* Plastic Mag Wheels -
Install reflectors on tabs using screw and nut.

12. Basket

Place basket (4) onto rear frame, centered between the rear wheels and immediately behind the sissy bar. Using holddown tabs (3) and sheetmetal screws (2), secure the basket to the two holes in the rear frame crossover tube and the two rear holes in the top of the transmission box. Rotate the holddown tabs as necessary to capture the wire of the basket in the indentation of the tab. Tighten screws with a 3/8" socket wrench.

13. Rear Fenders (Option)

To install rear fenders, first attach the fenders (13) to the fender braces (14) with the four screws (11) and nuts (12). DO NOT tighten at this time. NOTE: The curved tops of the fender braces should point outward. Attach fender braces to the tabs welded to the top of the axle housing and secure with bolts (16) and nuts (15). Before tightening, position fender over top of wheel; even-up both sides and tighten bolts. Lastly, position fenders parallel to the tires and tighten screws and nuts.

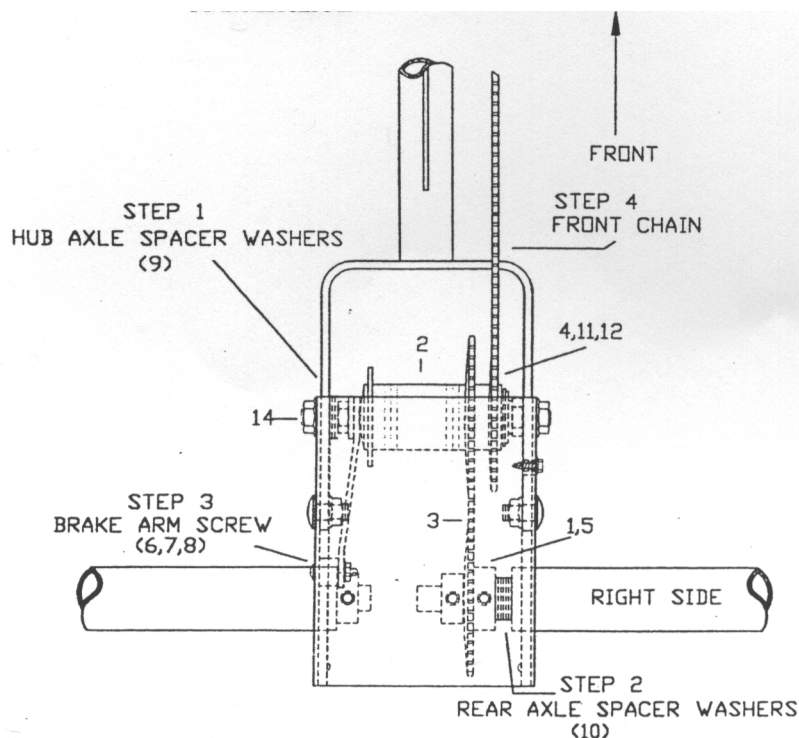
14. Final Check

Review the instructions, check connecting bolts and screws for tightness, and readjust the seat and handlebar as necessary.



Installation Guide

DeSoto/Regal Coaster Brake Kit # 12111



Check to make sure that you have all parts.

<u>Parts Listing</u>	<u>Qty</u>
1. 11066 Set Screws	2
2. 11667 TrikeCBHub	1
3. 11684 Rear Chain	1
4. 11939 Sprocket 21 Tooth Shimano	1
5. 11952 22 Tooth Solid Sprocket	1
6. 12170 Nut 10-32 Hex Keys	1
7. 12193 Screw 10-32x1 Phil Pan Hd MS	1
8. 12229 Washer #10 Flat	3
9. 12238 Hub Axle Spacers	3
10. 12240 Rear Axle Spacers	7
11. 16960 Dust Ring Shimano	1
12. 16961 Snap Ring Shimano	1
13. 18860 Solid Rear Wheel Pins	2
14. 19153 Nut Axle	2
15. Installation Instructions	2

NOTE:

DeSoto/ Regal Trikes w/ CB Hub Preinstalled in Frame

Proceed as follows:

'Skip over Kit Installation Preparation , Step 1 and Step 2.

Loosen hub axle nuts then proceed with Step 3 through Step 6.

Step 1

Locate three hub axle spacer washers (9) from parts bag and install them onto axle on the side which has the brake arm. Then insert hub into the open-ended L slot which is in the flat bar on the back end of the front frame. Refer to drawing for the location of hub axle spacer washers and correct hub position.

Step 2

Loosen set collar on right side rear axle and remove original freewheel assembly and square key. Freewheel will no longer be needed, but save key which will be needed to lock solid sprocket to axle. Locate six rear axle spacer washers (10) from parts bag and install on right rear axle next to bearing. Install 22 Tooth solid sprocket (5) onto axle with set screws (1) on the same side as the spacer washers. Reinstall square key and set collar. Tighten all set screws in place. Check that there is no sideways movement of rear axle in bearings. If any is found, loosen set screws and reposition set collar and sprocket until it is eliminated.

Step 3

Slide rear frame over front frame. Let the Coaster Brake Hub axle slip into open-ended slots in the front of the transmission box. Keep brake arm above rear axle tube while sliding frame sections together. Insert screw (7) to secure brake arm through slot in the transmission box. Install washers (8) to fill space between box and brake arm, and then install brake arm nut (6). Do not tighten until after chain is adjusted. Loosely install two of the frame bolts into transmission box.

Step 4

Install shortened front chain onto crank sprocket and outside sprocket on brake hub. Install rear chain (3) provided in parts bag around sprocket on hub and solid sprocket on rear axle. Slide frame assembly apart until chains are tight. Tighten the frame nuts first, and then after checking to make sure the hub is straight in frame tighten the axle nuts on brake hub. Tighten the nut and screw on the brake arm. Install chainguard, spreading rear opening of guard enough to clear chains.

#18168 1/98



Installation Guide

DeSoWRegal 3-Speed Coaster Brake Kit #12115

Check to make sure that you have all parts.

Parts Listing		QTY
1. 11066	Set Screws	2
2. 11684	Rear Chain	1
3. 11952	22 Tooth Solid Sprocket	1
4. 12170	Nut 10-32 Hex Keps	1
5. 12193	Screw 10-32x1 Phil Pan Hd MS	1
6. 12229	WasherS 10 Flat	3
7. 12240	Rear Axle Spacers	7
8. 12251	Hose Clamp	1
9. 12269	Cable Ties	4
10. 12285	Plastic Cable Stop S/A	1
11. 18049	Nut Axle S/A	1
12. 18860	Solid Rear Wheel Pins	2
13. 18909	Sprocket 2 IT S/A	1
14. 18913	Trike 3-spd CB Hub w/22 Spkt S/A	1
15. 18982	Snap Ring S/A	1
16. 18983	Dust Ring S/A	1
17. 18984	Washer Sprocket Spacer S/A	1
18. 18985	Nut Axle Right S/A	1
19. 18986	Hub Axle Antitum Washers S/A	2
20. 18993	Indicator Protector	1
21. 18995	Cable 3-Speed S/A	1
22. 18996	3-Speed Trigger S/A	1
23. 18997	Indicator Chain S/A	1
24. 18998	Adjusting Barrel S/A	1
25. Installation Instructions		3

Kit Installation Preparation

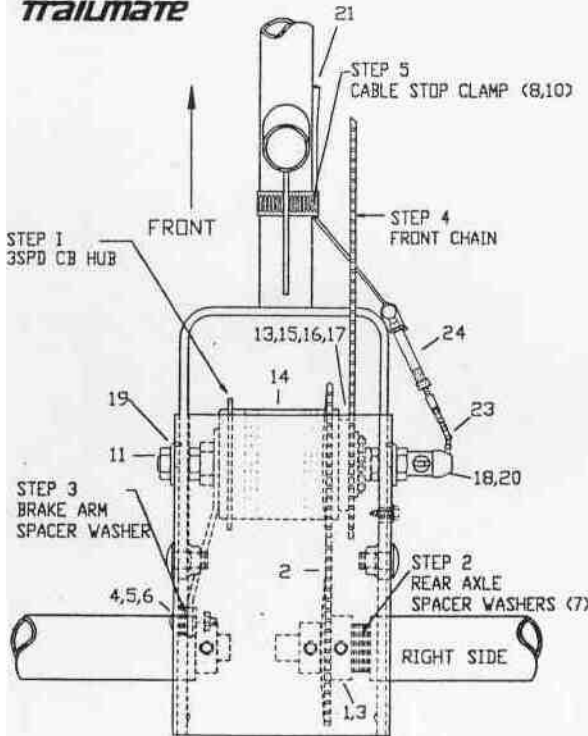
NOTE:

PeSoto/Regal Trikes w/ 3-spd CB Hub Preinstalled in Frame

Proceed as follows:

- Loosen hub axle nuts then proceed with Step 3 through Step 6.

Remove chainguard. Remove front chain and remove the frame bolts in transmission box and slide frame apart to expose L slot in front frame. Shorten front chain on



DeSoto to 93 pitch or shorten chain on Regal to 107 pitch.

Step 1

Install the 3-spd CB Hub (14) into the open-ended L slot which is on the back end of front frame. Refer to drawing for exact position of hub.

Step 2

Loosen set collar on right side rear axle and remove original freewheel assembly and square key. Freewheel will no longer be needed, but the save key square will be needed to lock solid sprocket to axle. Locate seven rear axle spacer washers (7) from parts bag and install on right rear axle next to bearing. Install 22 Tooth solid sprocket (3) onto axle with set screws (1) on the same side as the spacer washers. Reinstall square key and set collar. Tighten all set screws in place- Check that there is no sideways movement of rear axle in bearings. If any is found, loosen set screws and reposition set collar and sprocket until it is eliminated.

Step 3

Slide rear frame over front frame. Let the 3-spd Hub axle slip into open-ended slots in the front of the transmission box. Keep brake **arm** above rear axle tube while sliding frame sections together. Insert screw (5) to secure brake arm through slot in the transmission box. **Install** washers (6) to fill space between box and brake arm- and then install brake arm nut (4). Do not tighten until after chain is adjusted. Loosely install two of the frame bolts into transmission box. Place antitum washers (19) onto each end of the axle on the outside of transmission box with tabs positioned into the slots in the frame. Loosely install axle nuts (11,18) onto axle, refer to drawing for correct placement.

Step 4

Install shortened front chain onto crank sprocket and outside sprocket on brake hub. Install rear chain (2) provided in parts bag around sprocket on hub and solid sprocket on rear axle. Slide frame assembly apart until chains are tight. Tighten the frame nuts first, and then axle nuts. Note: When tightening nuts, make sure that the frame and hub is straight and not out of alignment. Tighten the nut and screw on the brake arm. Install chainguard, spreading rear opening of guard enough to clear chains.

StepS

Install 3-speed trigger (22) onto right side of handlebar in front of brake lever clamp. Fasten plastic cable (10) stop to main frame tube **with** hose clamp (8). Clamp should be 1 1/2" behind seat mast tube. Run cable (21) in front of trigger down along main frame and into plastic stop. Secure cable housing to tube frame with cable ties (9).

Step 6

Refer to above drawing and Diagram 1 of Sturmey Archer Installation Instructions for connecting cable to hub and gear adjustment.

MAINTENANCE AND INSPECTION

REGULAR MAINTENANCE: Bi-Monthly

1. Keep all painted parts cleaned and waxed for a long-lasting luster
2. Spray all chrome parts with recommended protective spray coating (LPS-1, WD-40, etc.). When spraying with protective coatings, it is recommended that you let parts set overnight so the coating will penetrate.
3. Lubricate the following:
 - Axle shafts
 - Inside bearing of both pedals
 - Chain - turn pedal crank forward and spray freely
4. When storing over prolonged periods, turn upside down to prevent flat spots from occurring on the tires. If stored outside, cover to protect finish and moving parts.

PREVENTIVE MAINTENANCE: Every Six Months

These are services that should be performed by your local bicycle shop. A fee may be charged.

1. Check tires for wear, rim cuts and valve core alignment (usually caused by improper air pressure)
2. Check wheels for cracks and alignment.
3. Check brakes for proper operation
4. Clean and repack all bearings and adjust all cones
5. Check for worn bearings, cones and cups
6. Check chain for adjustment and clean as needed
7. Check for loose bolts and nuts.

Attention: While your unit is new, some noises may occur when the unit is breaking in. Should they continue for more than 30 days, see you local bike shop.

INSPECTION

Check the following, as it applies to your cycle, on a regular basis:

1. Hand Brake: Make sure the brake engages, by squeezing the hand brake.
2. Wheels: Check wheels for alignment.
3. Pedals: Inspect pedal bearings and make sure pedal is tightly attached to crank.
4. Handgrips: Replace worn or loose grips.
5. Chain: Check for proper tightness. Replace damaged chain immediately.
6. Seat: Adjust seat for rider comfort and safety.
7. Tires: Keep tires inflated to the recommended tire pressure, as indicated on the tire's sidewall.
8. Reflectors: Replace missing reflectors immediately.
9. Chainguard: Replace damaged or missing chainguard immediately
10. Frame: Replace damaged frame immediately.



TRAILMATE

2359 Trailmate Drive
Sarasota FL 34243
(941)755-5511
Fax:(941)758-5141

For service or to order
replacement parts,
please contact your
local Trailmate dealer.

DeSOTO CLASSIC and EZ ROLL REGAL

This is a recreational unit, not designed for excessive speeds or misuse. Careless operation may cause rider to lose control and result in serious injury.

Do not brake or turn at high speeds; this may cause cycle to roll-over and rider injury.

Things to know before riding your cycle:

1. Know your local bicycle laws and wear a helmet
2. Do not exceed the recommended weight limit of 250 lbs
3. No more than one rider at one time
4. Do not stand on unit
5. Be sure to install safety flags
6. Wear light-colored clothing and protective gear
7. Do not ride at night
8. Children must be supervised by an adult at all times

Trailmate Limited Warranty

Trailmate, Inc., guarantees each cycle product against all defects in materials and workmanship for a period of 90 days from date of purchase. Tires and tubes are not covered by this guarantee.

During this period, any part that is judged by the makers to be defective will be replaced free of charge. Any failure resulting from accident, abuse, neglect, normal wear, or improper assembly or maintenance by the owner is not covered.

Trailmate, Inc., further authorizes a lifetime frame guarantee and will replace any frame, at no cost to the buyer, providing that item has not been used for rental use and that:

- 1) The item has not been altered, repaired, or modified in any way.
- 2) The item has not been subject to misuse, negligence, and/or an accident.
- 3) Original ownership is established.

Any parts under this guarantee on which claims are entered shall be returned for inspection with transportation charges prepaid by the claimant. Replacement parts will be shipped F.O.B. factory.

There are no warranties or guarantee, expressed or implied, written or oral, which extend beyond the description on the face hereof.

#18234
2/00

ITEM PART#18714 (1)
25 SCREW 8x1/2 TAP A HEX WASH



ITEM PART#12236 (2)
42 WASHER 5/16 SAE



ITEM PART#12199 (4)
2 SCREW 14x3/4 TYPE A HEX HEAD



ITEM PART#18867 (2)
43 FORK WHEEL RETAINER



ITEM PART#12218 (6)
30 SCREW 3/8-16x3/4 SHT NECK C



ITEM PART#12244 (2)
10 PIN ROLL 3/16x1 1/4



ITEM PART#12176 (2)
41 NUT 5/16-24 FLANGE HEX



ITEM PART#12069 (6)
3 BASKET HOLD DOWN



ITEM PART#12178 (6)
32 NUT 3/8-16 FLANGED



ITEM PART#12214 (2)
60 SCREW 5/16-18x1 3/4 HHCS



ITEM PART#12170 (8)
12 NUT 10-32 HEX KEPS



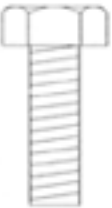
ITEM PART#12212 (1)
56 SCREW 5/16-18x1 1/2 HHCS GR



ITEM PART#12175 (1)
18 NUT 5/16-18 FLANGED



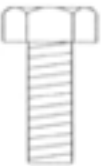
ITEM PART#12223 (2)
16 SCREW 3/8-16x1 HHCS



ITEM PART#12178 (2)
15 NUT 3/8-16 FLANGED



ITEM PART#12208 (2)
61 SCREW 5/16-18x3/4 HHCS



ITEM PART#12066 (2)
59 BRACKET L REGAL SEAT



ITEM PART#19171 (8)
11 SCREW 10-32x3/8 RHWS



(DESOTO AND REGAL)
ILLUSTRATED PARTS LIST
(REGAL ONLY)