

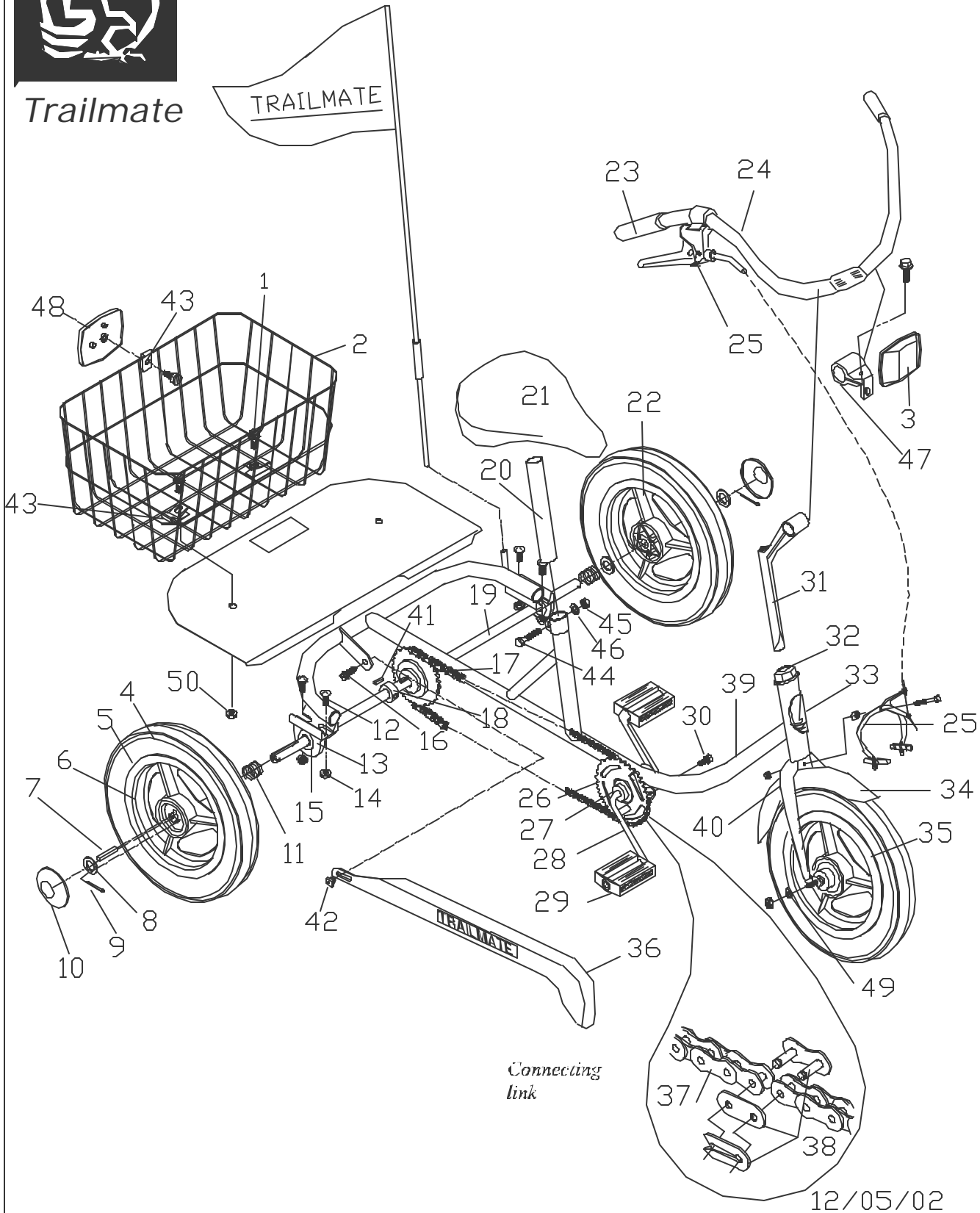
MINI TIKE
Assembly Instructions

ITEM NO.	PARTS NO.	DESCRIPTION	QTY.	ITEM NO.	PARTS NO.	DESCRIPTION	QTY.
1	11120	SCREW 1/4-20 x 3/4 FLANGE HD	2	26	19916	SPROCKET 32T MINI TIKE	1
2	19917	BASKET REAR MINI TIKE	1	27	11697	CRANK SET COMPLETE	1
3	11861	FR CLEAR 40-0122-00 SL122	1	28	19914	CRANK 3-1/2"	1
4	18208	TIRE 12.5 x 2.25 BSW	3	29	19915	PEDAL 1/2" MINI TIKE	1
5	19243	TUBE 12 x 2.125 ANGLE STEM	3	30	12188	SCREW10X3/8 TYPE B SHH	1
6	19895	WHL 12" MAG REAR KEYED INS	1	31	11813	STEM HANDLEBAR WALD #4	1
7	20012	KEY SQUARE 3/16 x 1-1/4	1	32	11831	HEAD SET COMPLETE	1
8	12240	WASHER SPACER 1x41/64x.062	4	33	11718	DECAL TM HEAD	1
9	11070	PIN COTTER 3/32x1	2	34	13994	FENDER 12' FRNT	1
10	19962	WHL CAP BLACK PLASTIC	2	35	19897	WHL 12" MAG FRONT 3/8 AXLE	1
11	12260	SPRING AXLE FANCYCLE/B/P	2	36	11708	CHAINGUARD DESOTO/EZ ST COLOR	1
12	12215	SCREW 5/16-18x3/4 CARRIAGE	4	37	19918	CHAIN /CL MINI TIKE 87 PITCH	1
13	18449	BEARING HOLDER TOP SHSFT SP	2	38	11679	CHAIN CONNECTING LINK	1
14	12175	NUT 5/16-18 FLANGED	4	39	19909	FRAME MINI TIKE ST COLOR	1
15	11642	BEARING AXLE 5/8 ASF 107E	2	40	19919	FORK 12" MWT CALIPER ST COLOR	1
16	12188	SCREW 10-32x3/8 SLTD HWH T/F/S	1	41	12246	KEY SQUARE 3/16x5/8	1
17	11949	FREEWHEEL 22T & ADAPTER ASSY	1	42	13198	SCREW GROMMET	1
18	12241	SET COLLAR 5/8"	2	43	12069	BASKET HOLD DOWN	3
19	19908	AXLE MINI TIKE REAR	1	44	13225	CLMP BOLT M8x38MM LG HH	1
20	12076	SEAT POST 9"	1	45	13226	CLMP WASHER M8 FLAT	1
21	19911	SEAT MINI TIKE	1	46	13227	CLMP NUT M8 HEX	1
22	19894	WHL 12" MAG REAR 5/8 BORE	1	47	11865	HANDLE BAR BRACKET	1
23	11801	GRIP BLACK 7/8 #40-0203-00	2	48	11862	RR RED 40-0121-01 SL122	1
24	19912	HANDLEBAR MINI TIKE	1	49	18867	FORK WHEEL RETAINER	2
25	11645	BRAKE CALIPER MWT ASSY FRT	1	50	12172	NUT 1/4-20 FLANGED	2
	11654	BRAKE CALIPER LOCK LEVER	1				



Trailmate

MINI TIKE ILLUSTRATED PARTS BREAKDOWN



Connecting
link

12/05/02

1. Preparation

Remove all parts from the frame and wheel cartons. Check tire air pressure and inflate to 30 psi. Make sure tire are properly seated on rims.

2. Front Wheel

Install front wheel on front fork, center it and tighten secure.

3. Handlebar

Slide the handlebar (24) through the clamp on the stem (31) with the portion containing the long bolt to the rear of handlebar. Install clear reflector. Install the stem into the fork (40) until the line marked on the stem is not visible. Align handlebar to the fork as it faces straight ahead and tighten bolt in stem firmly. DO NOT over tighten, this may damage the fork tube. CAUTION: Check that head set (32) is tight.

DO NOT over tighten, this may damage the fork bearings. Fork assembly should rotate freely. Slide handbrake lever (25) onto right side of handlebar and tighten lightly. Slide hand grips (23) on handlebar until they bottom out. You may wish to use a small amount of soapy water inside the grip to make installation easier. NEVER use oil or other lubrications!

Slide handbrake lever against grip, position for a comfortable grip and secure tightly.

4. Caliper Brake

The front caliper brake assembly comes attached to the front fork. Unwrap the brake cable and insert the "ball" end into round slot in the brake lever. Place the bezel (silver cap-type piece) on the cable into the hole in the brake base (mounted on the handlebar). Feed the cable through the adjusting barrel on the left side of caliper brake assembly. Thread the brake wire through the cable clamp. Adjust position of brake pads (should line up with the rim). Squeeze the brake pads too the rim and tighten caliper cable clamp. Caliper brake pads should be 1/8" of the wheel rim. Use adjusting barrel if necessary. Install the cable end on the end of the cable and squeeze with the pliers.

5. Final Check

Review the instructions, check connecting bolts and screws for tightness, and readjust the seat and handlebar as necessary.

Place the **Safety Flag** in flag holder on the frame.

